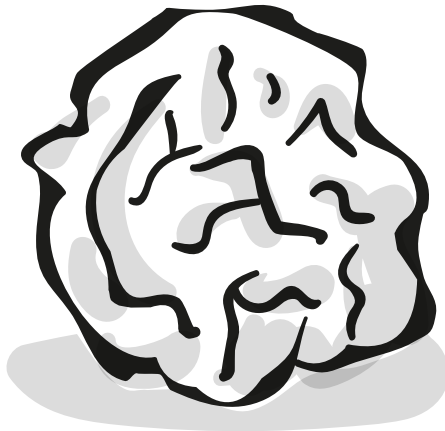


# THE SURPRISING FACTS LITTER QUIZ

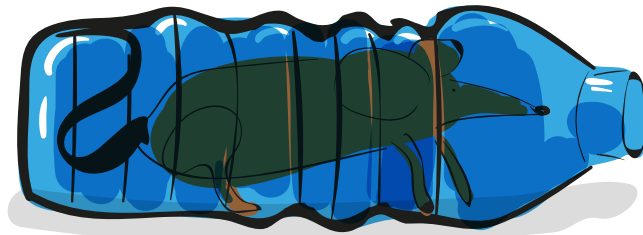


# TRUE OR FALSE?



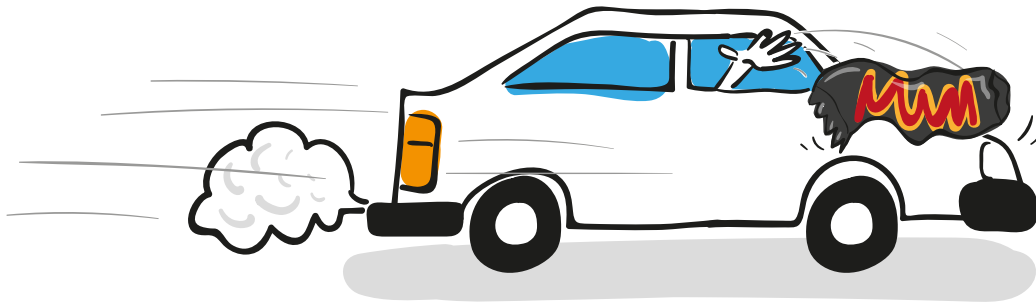
DROPPING LITTER  
IS ILLEGAL

# TRUE OR FALSE?



SMALL ANIMALS CAN CRAWL  
INTO LITTERED CANS AND BOTTLES  
AND GET STUCK INSIDE

# TRUE OR FALSE?



LITTER THROWN FROM CARS  
DOESN'T BOTHER ANYBODY

# TRUE OR FALSE?



ANYONE CAN PICK UP LITTER  
AND PUT IT IN THE BIN IF IT'S  
CLEAN AND DRY

# TRUE OR FALSE?



TURTLES FIND PLASTIC BAGS  
FLOATING IN THE SEA AND EAT THEM,  
CONFUSING THEM FOR JELLY FISH

# TRUE OR FALSE?



HELIUM BALLOONS DRIFT UP TO  
SPACE AND STAY THERE

# CAN YOU GUESS...

## HOW MUCH IT COSTS TO PICK UP LITTER ACROSS THE UK?



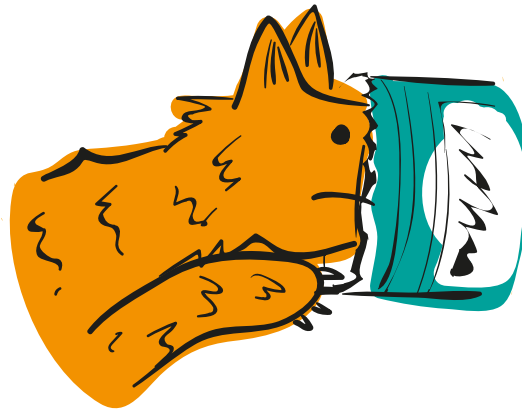
£ 1 MILLION      £50 MILLION

£800 MILLION

# CAN YOU GUESS...

**HOW MANY CALLS THE RSPCA  
GET EVERY YEAR ABOUT ANIMALS  
WHO HAVE SWALLOWED OR BEEN  
HURT BY LITTER?**

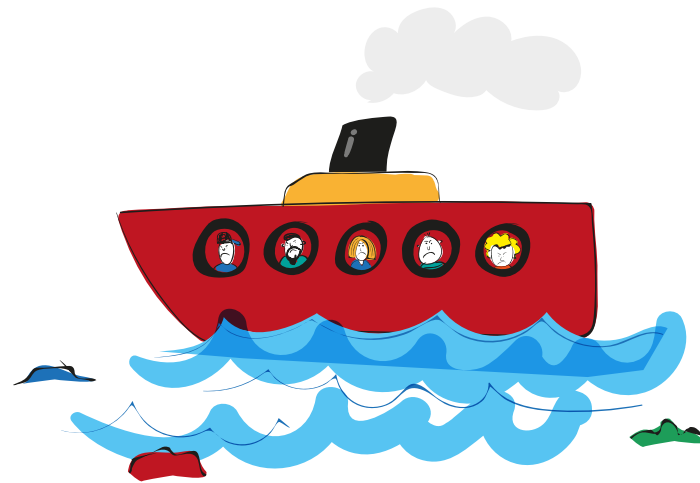
500



1000

5000

**CAN YOU GUESS...**  
**WHERE MOST RUBBISH FOUND**  
**IN THE SEA COMES FROM?**



**BOATS**

**THE LAND**

**SPACE**

# **CAN YOU GUESS...**

## **HOW LONG IT TAKES FOR A FIZZY DRINK CAN TO BIODEGRADE...?**



**1 YEAR      UP TO 20 YEARS**  
**UP TO 450 YEARS**

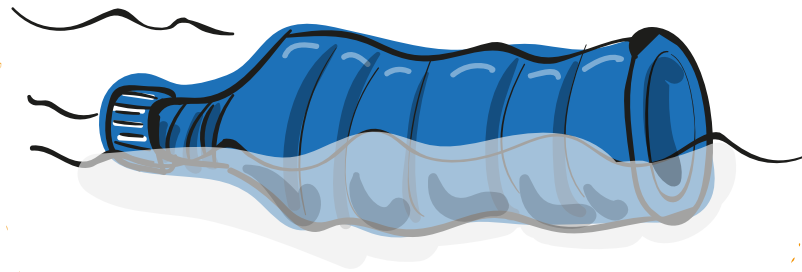
# **CAN YOU GUESS...**

## **HOW LONG IT TAKES A DRINKING STRAW TO BIODEGRADE**

**2 YEARS**  
**20 YEARS**  
**200 YEARS**

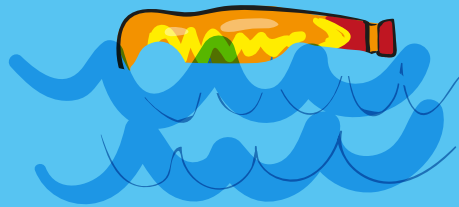


**CAN YOU GUESS...**  
**HOW MANY PIECES OF PLASTIC**  
**THERE ARE IN THE OCEAN?**



**5 MILLION**  
**5 BILLION**  
**5.25 TRILLION**

# THE SURPRISING FACTS LITTER QUIZ



## ANSWERS

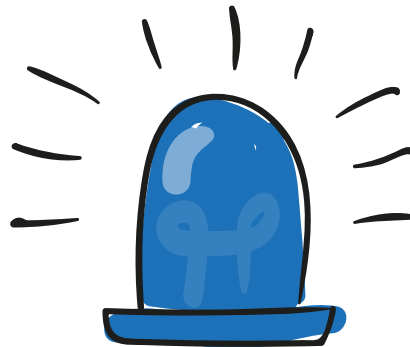
# TRUE OR FALSE?

DROPPING LITTER  
IS ILLEGAL

---

**TRUE**

IT'S ACTUALLY ILLEGAL TO DROP LITTER.  
PEOPLE CAN GET FINED UP TO £80. MORE AND MORE LOCAL COUNCILS  
ARE STARTING TO FINE PEOPLE.



# TRUE OR FALSE?

SMALL ANIMALS CAN CRAWL INTO  
LITTERED CANS & BOTTLES AND  
GET STUCK INSIDE

---

**TRUE**

IT'S SAD. SMALL ANIMALS LIKE MICE AND LIZARDS DO CRAWL INTO BOTTLES AND CANS LOOKING FOR FOOD. RUSTY CANS AND BROKEN GLASS ARE VERY DANGEROUS TOO.



# TRUE OR FALSE?

LITTER THROWN FROM CARS  
DOESN'T BOTHER ANYBODY

---

**FALSE**

LITTER THROWN FROM CARS CAN CAUSE ACCIDENTS  
AS DRIVERS SWERVE OR BRAKE SUDDENLY AS  
IT FLIES TOWARDS THEM. ANIMALS ALSO  
VENTURE ONTO ROADS TO INVESTIGATE  
LITTER (LOOKING FOR FOOD).



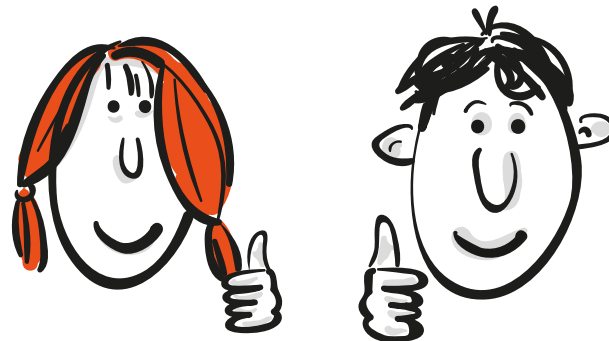
# TRUE OR FALSE?

ANYONE CAN PICK UP LITTER  
AND PUT IT IN THE BIN IF IT'S CLEAN AND DRY

---

## TRUE

THOUSANDS OF PEOPLE PICK UP LITTER EVERY DAY. IF IT'S DRY, CLEAN AND NOT SHARP IT WON'T DO YOU ANY HARM – AND IT WILL DO THE ENVIRONMENT LOTS OF GOOD! IT ALSO GIVES THE MESSAGE TO OTHER PEOPLE THAT IT'S NOT OK TO DROP LITTER IN THE FIRST PLACE.



# TRUE OR FALSE?

TURTLES FIND PLASTIC BAGS  
FLOATING IN THE SEA AND EAT THEM,  
CONFUSING THEM FOR JELLY FISH

---

**TRUE**

SEA TURTLES AND OTHER SEA CREATURES CONFUSE PLASTIC BAGS, BALLOONS AND OTHER LITTER FOR FOOD. THIS MISTAKE CAN DAMAGE THEIR DIGESTIVE SYSTEM AND KILL THEM. TO A TURTLE A PLASTIC BAG IS EASILY MISTAKEN FOR A JELLYFISH.





PHOTO BY TROY MAYNE



IMAGE COURTESY OF [BALLOONSBLOW.ORG](http://BALLOONSBLOW.ORG)

# TRUE OR FALSE?

HELIUM BALLOONS DRIFT UP TO  
SPACE AND STAY THERE

---



**FALSE**

WHAT GOES UP MUST COME DOWN.



WE ALREADY KNOW ANIMALS CAN CONFUSE BALLOONS FOR FOOD.

THEY CAN ALSO BECOME ENTANGLED IN THE RIBBONS.

BIODEGRADABLE BALLOONS ARE NO BETTER, TAKING MONTHS  
TO BREAK DOWN. SO NEVER LET BALLOONS GO.

CUT THEM INTO PIECES THEN  
PUT THEM IN THE BIN!



PHOTO BY RICHARD GILBERT COURTESY OF  
BALLOONSBLOW.ORG



PHOTO BY W MILLER COURTESY OF  
BALLOONSBLOW.ORG

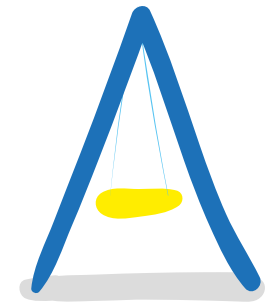
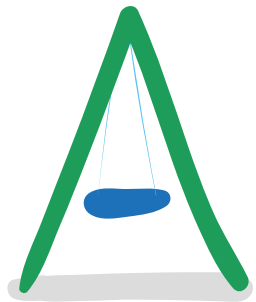


PHOTO BY DAVID STEELY COURTESY OF  
BALLOONSBLOW.ORG'

# CAN YOU GUESS...

## HOW MUCH IT COSTS TO PICK UP LITTER ACROSS THE UK?

---



**£800 MILLION**

IMAGINE WHAT OTHER GOOD THINGS THE MONEY  
COULD BE SPENT ON WHERE YOU LIVE – NICER PARKS,  
MORE THINGS TO DO FOR YOUNG PEOPLE,  
BETTER CARE FOR THE ELDERLY...  
WHAT WOULD YOU SPEND IT ON?



# CAN YOU GUESS...

**HOW MANY CALLS THE RSPCA  
GET EVERY YEAR ABOUT ANIMALS  
TRAPPED BY, INJURED BY  
OR EATEN LITTER?**

---

**5000**

ANIMALS CAN GET TRAPPED, CUT, SUFFOCATED BY  
OR SWALLOW ALL KINDS OF LITTER. WILD BIRDS,  
RODENTS AND ANIMALS THAT LIVE IN WATER  
CAN ALL BECOME VICTIMS AS CAN OUR PETS.

[WWW.RSPCA.ORG.UK/ADVICEANDWELFARE/LITTER](http://WWW.RSPCA.ORG.UK/ADVICEANDWELFARE/LITTER)



DUCK WITH BEAK STUCK  
IN DRINKS CAN



BARN OWL TANGLED IN  
A SKY LANTERN



SEAL STUCK IN PART OF AN  
OLD FRISBEE



DUCK STUCK IN PLASTIC RINGS  
FROM DRINKS CANS

# CAN YOU GUESS...

## WHERE MOST RUBBISH FOUND IN THE SEA COMES FROM?



### THE LAND

SOME OF THAT COMES FROM BEACHES,  
WHERE PEOPLE LEAVE THEIR RUBBISH  
AFTER A DAY IN THE SUN. SOME LANDS  
IN RIVERS AND STREAMS FURTHER  
INLAND AND GETS CARRIED OUT TO SEA.



# CAN YOU GUESS...

## HOW LONG IT TAKES FOR A FIZZY DRINK CAN TO BIODEGRADE...?

---

**UP TO 450 YEARS**

BUT IF RECYCLED IT COULD BE MADE INTO  
SOMETHING NEW WITHIN A FEW WEEKS!



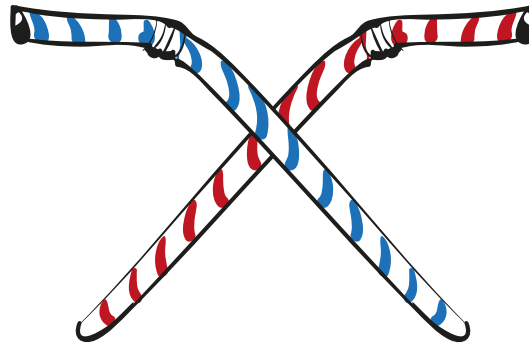
# **CAN YOU GUESS...**

## **HOW LONG IT TAKES FOR A DRINKS STRAW TO BIODEGRADE?**

---

**200 YEARS**

LOTS OF CAFES AND RESTAURANTS HAVE STOPPED USING STRAWS  
AS THEY ARE PLASTIC AND PEOPLE DON'T REALLY NEED TO USE THEM.



**CAN YOU GUESS...**  
**HOW MANY PIECES OF PLASTIC**  
**THERE ARE IN THE OCEAN?**

---

**5.25 TRILLION**

A TRILLION IS ONE TRILLION IS ONE MILLION  
TIMES ONE BILLION.

000 000 000  
000 000 000

# TO FLUSH OR NOT TO FLUSH?!

WHAT CAN YOU FLUSH DOWN THE LOO?



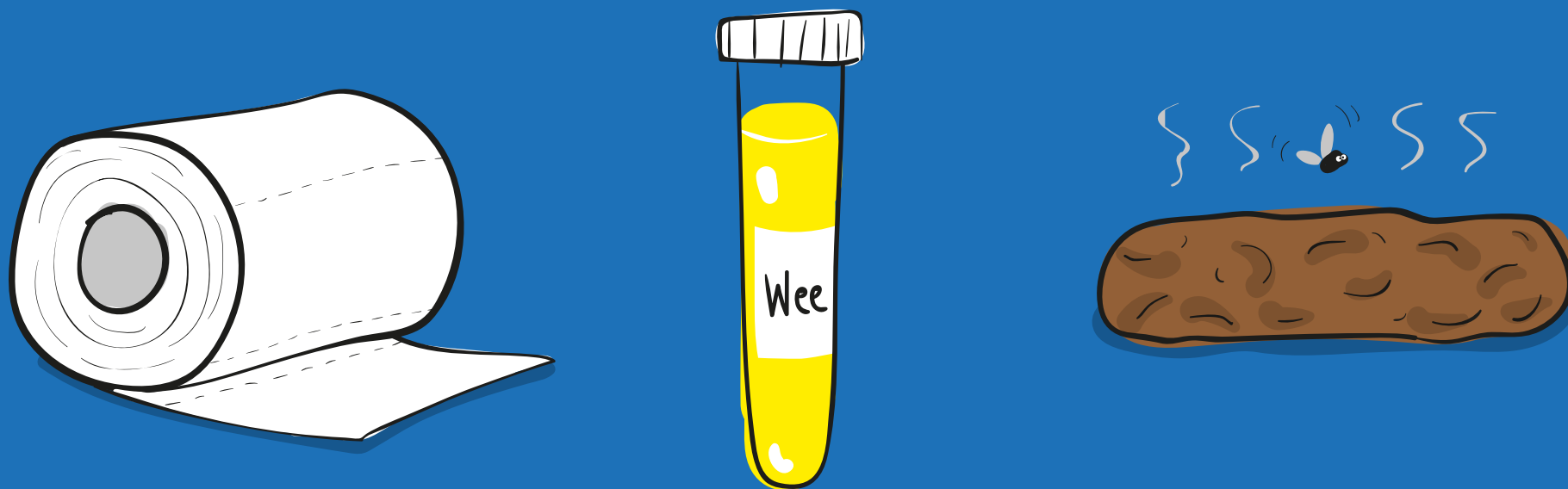
FIVE POINTS FOR EACH ONE YOU GET RIGHT

# TO FLUSH OR NOT TO FLUSH?!



# TO FLUSH OR NOT TO FLUSH?!

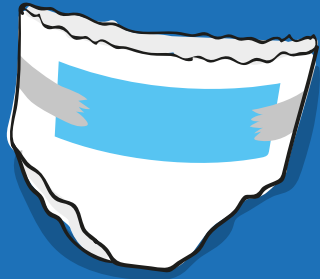
HERE'S WHAT YOU CAN FLUSH!



YOUR DRAINS AT HOME AND THE SEWERS UNDER OUR STREETS AND HOUSES  
ARE ONLY DESIGNED TO TAKE AWAY WATER, TOILET TISSUE  
AND HUMAN WASTE (POO AND WEE TO YOU AND ME!)

# TO FLUSH OR NOT TO FLUSH?!

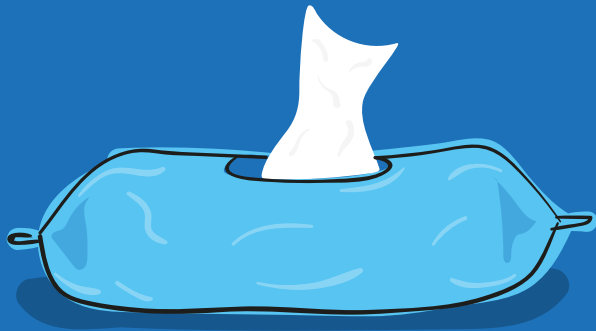
AND HERE'S WHAT YOU CAN'T AND WHY...



NAPPIES, COTTON WOOL, PAPER (APART FROM LOO PAPER) CAN ALL QUICKLY BLOCK SEWERS. WHEN RAIN FALLS, SEWERS CAN OVERFLOW AND THE WASTE GETS INTO RIVERS, STREAMS AND THE SEA. POOR FISH!  
(AND POOR US IF WE END UP SWIMMING IN IT...)

BLOCKED DRAINS CAN ALSO LEAD TO HOMES BEING FLOODED - IT HAPPENS TO THOUSANDS OF HOMES EACH YEAR, DON'T LET IT BE YOURS.

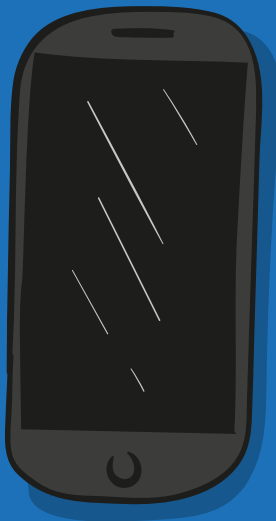
# TO FLUSH OR NOT TO FLUSH?!



THESE ITEMS ARE TWO OF THE WORST OFFENDERS. DID YOU KNOW THAT 'FLUSHABLE WIPES' DO LOADS OF DAMAGE TO BOTH THE SEWAGE SYSTEM AND OUR ENVIRONMENT? MORE AND MORE ARE BEING FOUND WASHED UP ON BEACHES (REMEMBER WHAT WE JUST SAID ABOUT SEWERS GETTING BLOCKED AND OVERFLOWING).

THOUSANDS OF COTTON BUD STICKS ARE ALSO FOUND WASHED UP ON BEACHES EVERY YEAR. THE COTTON BIT DISAPPEARS BUT THE PLASTIC STICKS DON'T. PLEASE PUT THEM IN THE BIN, NOT DOWN THE BOG.

# TO FLUSH OR NOT TO FLUSH?!



OF COURSE THESE TWO WERE A JOKE,  
BUT JUST FOR FUN PUT YOUR HAND UP  
IF YOU KNOW SOMEONE WHO HAS  
DROPPED THEIR TOOTHBRUSH OR PHONE  
DOWN THE LOO....

YUK!

# YOUR PLEDGE

WHAT MIGHT YOU PROMISE TO DO?

“I WON’T RELEASE HELIUM BALLOONS”

“I WON’T BUY DRINKS IN PLASTIC BOTTLES”

“I PROMISE NEVER TO DROP LITTER”

“I WON’T USE STRAWS IN MY DRINKS”

“I’LL ENCOURAGE ADULTS I KNOW TO USE  
REUSABLE COFFEE CUPS”

# MY LITTER PLEDGE

NAME:

MY PLEDGE IS:

---

---

---

---

SIGNED:

**YOU CAN  
REALLY  
MAKE A  
DIFFERENCE!**

